

Masefield Primary School

Masefield Road, Little Lever,
 Bolton, BL3 1NG

Tel: 01204 333714

Fax: 01204 333531

office@masefield.bolton.sch.uk

www.masefield.bolton.sch.uk

School Twitter: @MasefieldCP



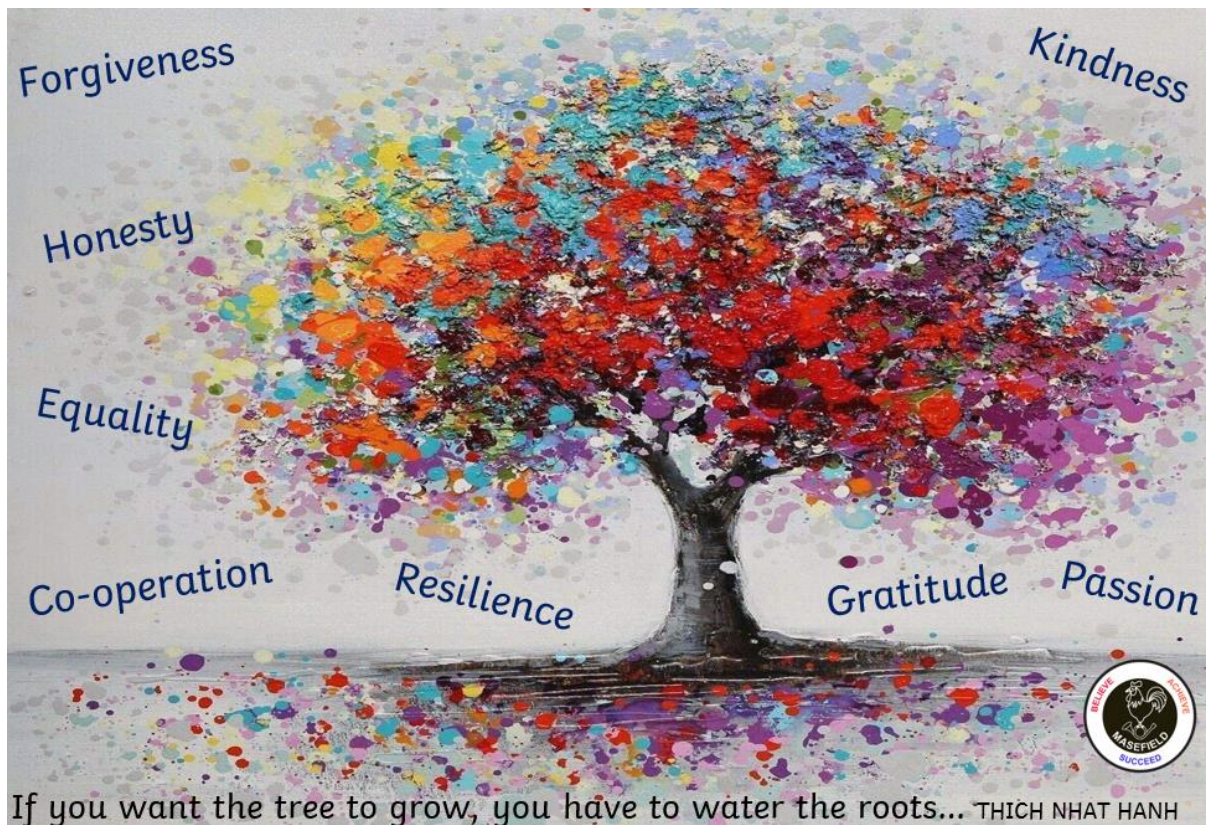
Executive Headteacher: Mrs L Whittaker
Head of School: Mr A Done

Dear Parents/Carers,

A **Happy New Year** to all our parents and children from the governors and staff here at Masefield.

Firstly may I take the opportunity to say a very big thank you to all of you for your generous cards and gifts presented to the staff for Christmas. Your gifts and kind words are very much appreciated.

This term we will continue our journey towards excellence to ensure all our pupils **Believe, Achieve & Succeed**. Each term we focus on a 'Core Value' with pupils using 'The Masefield Way' – our bespoke behaviour curriculum. Our Core Values are shown below:



Artsmark Silver Award
 Awarded by Arts Council England



Leading Parent Partnership Award

2021-2024



Working with National Centre for Excellence in the Teaching of Mathematics



Masefield Primary School

Masefield Road, Little Lever,
 Bolton, BL3 1NG

Tel: 01204 333714

Fax: 01204 333531

office@masefield.bolton.sch.uk

www.masefield.bolton.sch.uk

School Twitter: @MasefieldCP



Executive Headteacher: Mrs L Whittaker

Head of School: Mr A Done

Matters of Interest

Events Overview/Dates for the Diary – a link will be sent to our events overview.

Curriculum Overviews – On Friday, you will receive a curriculum overview for the Spring 1 term along with Knowledge Organisers for each subject. These resources will support your child with their learning.

Medical Needs – As we start a new term, please inform the class teacher or office of any new medical needs your child has.

Uniform – Please ensure all pupils return to school in their full school uniform including black shoes – no joggers or trainers. It's important we set high expectations for our pupils in all areas of school life. PE Kit must be in school or children cannot join in with PE lessons.

We now have a pre-loved shop for uniform – you can view our stock here:

<https://app.uniformd.co.uk/items/190>

Jewellery, make up and nail varnish is not permitted. However small stud earrings are allowed. Parents must provide plasters or remove earrings for sporting activity.

**School will not be responsible for the loss of any jewellery or equipment.*

PE kits - A number of children are regularly forgetting their PE kit thus needing to borrow a kit from the spare stock in school. We would ask that you ensure that your child brings his/her PE kit into school at the beginning of each half term. They can then remain in school until the end of the half term.

Safety Notice - Please **do not** drive into the school car park unless you have a disabled badge or stop on the zigzag lines outside school. These actions put all our children in great danger. Dogs are not allowed on the school premises.

Twitter & Facebook - We are now on twitter (@masefieldcp) and facebook (Masefield Primary School). Please follow us to find out all about our learning each day.



Leading Parent Partnership Award

2021-2024



Working with

National Centre for Excellence in the Teaching of Mathematics





Masefield Primary School

Masefield Road, Little Lever,
Bolton, BL3 1NG



Tel: 01204 333714

Fax: 01204 333531

office@masefield.bolton.sch.uk

www.masefield.bolton.sch.uk

School Twitter: @MasefieldCP

Executive Headteacher: Mrs L Whittaker

Head of School: Mr A Done

The School Day

Reception - Year 2 (EYFS & KS1)

8.40am - Doors open & morning work started

8.50am - 3.25pm - School Day Hours

This equates to 33 hours a week

Year 3 - 6 (KS2)

8.40am - Doors open & morning work started

8.50am - 3.30pm - School Day Hours

This equates to 33.5 hours a week

Entering School

Our doors will be open from 8.40am and children are welcome to come straight into class.

Please be punctual as lateness impacts on your child's progress. Any pupils arriving after 9am will be marked as late on the register.

Holidays in term time

Attendance today = success tomorrow!

Holidays must not be taken during term time as this has an extremely detrimental effect on your child's education.

The long-term cost to your child's education of going on holiday in term time far outweighs the short-term gain of the holiday at the time. The £60 fixed penalty notice is the least of the costs; it is the impact on your child's future educational success that presents the greatest cost. Children miss vital learning that cannot be repeated. It is widely acknowledged that mental health and personal well-being flourish when children have good routines and engage with their learning. Holidays in term time are disruptive on both counts. I urge you to prioritise the long-term benefits of regular school attendance, over the short-term impact of a holiday in term time.

Holidays List – this can be found on the school website.

Thank you for your continued support,





Masefield Primary School

Masefield Road, Little Lever,
Bolton, BL3 1NG



Tel: 01204 333714

Fax: 01204 333531

office@masefield.bolton.sch.uk

www.masefield.bolton.sch.uk

School Twitter: @MasefieldCP

Executive Headteacher: Mrs L Whittaker

Head of School: Mr A Done

Mr A Done
Head of School



Leading Parent
Partnership Award

2021-2024



Working with
National Centre
for Excellence in the
Teaching of Mathematics



Healthy School

